





BRD
STS45



Quay side container crane operator cabin

The cabin is equipped as follows:

- Thermal insulation
- Highly insulated glasses
- Front window opening with a gas piston device
- Side sliding windows on aluminium frames
- High resistance floor glass, 40 mm thick, complete with sliding adjustable footrest grids and Brieda B5552 defogger device.
- Large outside spoiler to keep the floor glass as much clean as possible. It is properly installed so that it doesn't interfere with the operator's view.
- Front pantograph windshield wiper
- Large roof gutter for water drainage complete with drain pipes
- Brieda pressurizing unit complete with active carbon filters for exhaust gases
- Split type air conditioner
- Rear view mirrors



BRD STS61D



Quay side container crane cabin Contship Terminal La Spezia

The cabin is equipped as follows:

- Thermal insulation
- Highly insulated glasses
- Side sliding windows on aluminium frames

- High resistance floor glass 40 mm thick, complete with sliding adjustable footrest grids and Brieda B5552 defogger device. Complete of anti-scratch glass protection
- Large outside spoiler, to keep the floor glass as much clean as possible. It is properly installed so that it doesn't interfere with the operator's view.



- Roof gutter for water drainage
- Split type air conditioner
- Shock absorbing device
- Tip-up seat
- Smart Bar light box
- Brieda adjustable touch screen support
- Brieda DYNAMIC control station



**BRD
STS89**





Quay side container crane Guadeloupe port

The cabin is equipped as follows:

- Thermal insulation
- Highly insulated glasses
- Front window opening with a gas piston device
- Side sliding windows on aluminium frames
- High resistance floor glass, 40 mm thick, complete with sliding adjustable footrest grids and Brieda B5552 defogger device
- Large outside spoiler to keep the floor glass as much clean as possible. It is properly installed so that it doesn't interfere with the operator's view
- No. 3 pantograph windshield wipers
- Large roof gutter for water drainage complete with drain pipes
- Brieda pressurizing unit PRZ400 complete with active carbon filters for exhaust gases
- Split type air conditioner
- Tip-up seat
- Shock absorbing device
- Rear view mirrors
- Brieda control station with pneumatic seat and adjustable side boxes



BRD STS10



Ship to shore cabin Chennai port

The cabin is equipped as follows:

- Thermal insulation
- Sliding side glasses
- Glasses Parsol green colour to reduce the sun reflections
- Removable floor glasses for cleaning operation complete with Brieda B5552 defogger device

- Pantograph windshield wiper complete with electric washer
- Split type air conditioner
- All electrical components completely wired

BRD STS11



Ship to shore cabin MTL Hong Kong port

The cabin is equipped as follows:

- Thermal insulation
- High resistance tempered and laminated glasses
- High resistance floor glass, 40 mm thick, complete with footrest grid protection
- Roll up blinds
- Installation of the components on supports which are adjustable according to the operator's needs
- Brieda pressurizing unit PRZ200 to insert filtered and clean air in the cabin
- Glass defogger device
- Split type air conditioner
- Painting inside the cabin to avoid reflection
- Convex rear-view mirrors

BRD HRT 1213



IMCC Abu Dhabi RTG Crane cabin

The cabin is equipped as follows:

- Thermal insulation
- Safety glasses
- No. 3 sliding windows on aluminium frames
- Floor glasses opening for cleaning operations

- Front windshield wiper
- Tip-up seat
- Adjustable monitor support
- Brieda control station type PMB22 with seat SB3



BRD SHP 1415



Kocks crane shipunloader cabin

The cabin is equipped as follows:

- Thermal insulation
- High resistance glasses
- Front window opening with a gas piston device
- No. 4 inwards opening windows to enable a simple cleaning.
- Removable floor glasses for cleaning operations supplied with adjustable sliding footrest grids

- Anti-reflex central floor glass
- Pantograph front windshield wiper
- Roof gutter for water drainage
- Ergonomic and adjustable monitor supports
- Split air conditioner
- Rear view mirrors



BRD STS16



Quay side container crane cabin Port de la Reunion

The cabin is equipped as follows:

- Thermal insulation
- Highly insulated glasses
- Side sliding windows on aluminium frames
- High resistance floor glass, 40 mm thick, complete with sliding adjustable footrest grids and Brieda B5552 defogger device
- Large outside spoiler, to keep the floor glass as much clean as possible. It is properly installed so that it doesn't interfere with the operator's view
- Large roof gutter for water drainage complete with drain pipes

- Brieda pressurizing unit PRZ200 complete with active carbon filters for exhaust gases.
- Split type air conditioner
- Rear view mirrors
- Shock absorbing device
- Tip-up seat
- Smart Bar light box
- Brieda adjustable touch screen support
- Brieda Dynamic Control Station

You can find the cabin interior view on pages 38/39





BRD JC181



Jib crane operator cabin

The cabin is equipped as follows:

- Thermal insulation
- No. 2 windows opening with a gas piston device
- No. 2 vertically sliding side glasses
- High resistance thermopane roof glass, supplied with windshield wiper. It has a double sun radiation protection
- Windshield wiper for cleaning the front glass
- Front adjustable safety pipes
- Roll up blinds
- Sliding door
- Split air conditioner
- Brieda control station PMB11 with seat SB2

BRD JC182



Polivis x standard cabin for jib crane

The cabin is equipped as follows:

- Thermal insulation
- Parsol green colour safety glasses against breaking
- Windows opening with a gas piston device
- Outwards opening roof window
- Removable floor glasses for cleaning operations
- Pantograph windshield wiper
- Door positioned in the cabin back wall
- Window type air conditioner
- Brieda rotating control station PMB10 with seat SB2

BRD JC191



Jib crane operator cabin

The cabin is equipped as follows:

- Thermal insulation
- No. 2 opening front windows with a gas piston device
- No. 2 vertically sliding side glasses
- Adjustable front safety bars
- High resistance floor glass, 40 mm thick with Brieda B5552 glass defogger device

BRD HRT 192



Polivis X standard cabin Elisabeth Port South Africa

The cabin is equipped as follows:

- Insulated glasses
- Electric windshield wiper
- Electric panel integrated in the structure
- Adjustable front safety bars
- High resistance floor glass, 40 mm thick with Brieda B5552 glass defogger device.
- Tip-up seat
- Brieda control station PMB10 with seat SB2

BRD JC2021



**Mobile
harbour crane operator cabin**

The cabin is completely constructed in stainless steel and equipped as follows:

- Thermal insulation
- Electrically opening front glass
- Vertically sliding side glasses

BRD
JC2021
R



- High resistance thermopane roof glass complete with windshield wiper. It has a double protection against sun radiation
- Big windshield wiper for a complete cleaning of the front glass

- Front adjustable safety pipes
- Brieda B5552 glass defogger device
- Roll up blinds
- Split type air conditioner

Shipunloader Stacker Reclaimer





BRD STK 2425



Thyssenkrupp crane shiploader cabin BHP Port Hedland

The cabin is equipped as follows:

- Thermal insulation
- High resistance glasses
- Pantograph front windshield wiper
- Roof gutter for water drainage
- Sun blinds

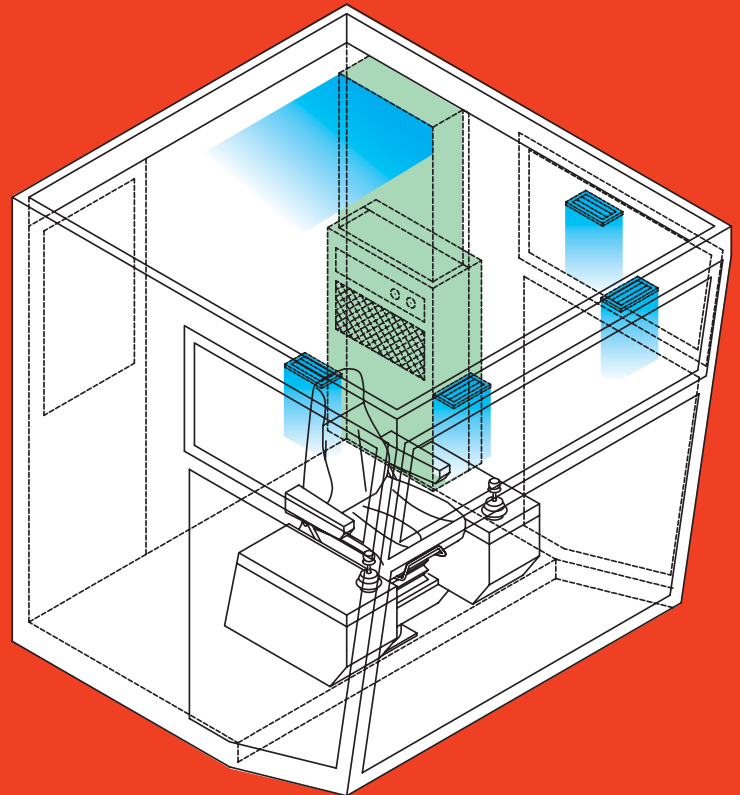
- Split air conditioner
- Brieda ergonomic and adjustable monitor and keyboard supports
- Trainer seat
- Brieda control station PMB33 with seat SB2





Steel Mill Plants Cabins

Heat insulation
Glasses with high thermal resistance and against heat irradiation
Wide visibility on the working area
Floor insulated with melamine resin
Heat shield under the cabin
Brieda Air conditioner HTB suitable to work with high temperatures up to 70°C
Power range from 3 kW to 6 kW.
The air distribution is from the roof through adjustable small openings, which ensure a uniform air diffusion.





BRD
SMP2627

BRD SC281



Polivis Standard Cabin

On this type of structure, it is possible to install glasses with high thermal and sound insulation without any structural modification.

- Windows with adjustable piston device to enable the opening adjustment
- Wall insulation for a high thermal sound insulation

BRD SC282





BRD
SC290



Macgregor Offshore Cabin

The cabin is equipped as follows:

- Thermal insulation
- High resistance glasses
- Removable floor glasses for cleaning operations protected with footrest grids
- Side window opening with a gas piston device
- Electrical cabinet integrated in the structure
- Side electrical panel for the ergonomic placement of the communication systems
- Flexible reading lamp

- 6 kW Brieda defrosting/heating device
- Speakers
- Roof with special insulation material
- Big front windshield wiper to get the maximum possible glass cleaning
- Sun blind type "Gold" highly filtering the sun light
- Adjustable Brieda ergonomic support for touch screen Type Supp 005
- Air conditioner 230V-60Hz
- Brieda control station type PMB33



BRD
HS3233





BRD
TGM
X3435





High visibility cabin

The cabin is equipped as follows:

- Sliding or hinged door
- Inner thermal insulation
- Pantograph windshield wiper
- Right side sliding windows
- Demountable floor to enable the cables passage

Control Stations







**Welcome to a new dimension:
DYCS Brieda Cabins**

A new generation of ergonomically-designed Crane Cab Operator interface devices.

This is the control station which provides an effective scientifically-tested answer to the persistent crane operator lower back stress and pain.

With the new and innovative function of the joystick, the forearm is completely supported.

The Brieda Dynamic Project is in accordance with the European Standard: EN 1005-3/4/5

- Human Physical Performance
- Risk assessment for repetitive handling high frequency
- Evaluation of work postures and movements

The OCRA Index Method

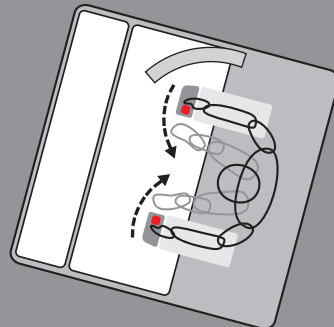
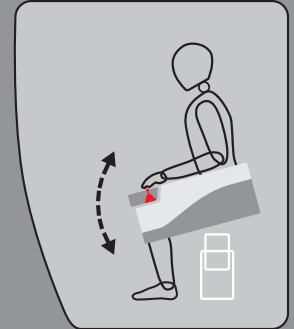
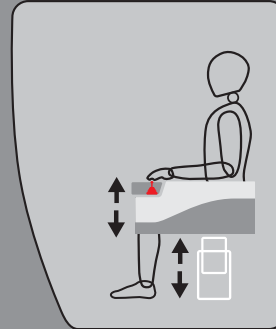
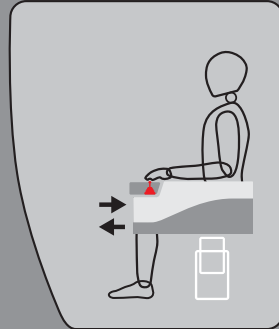
- Occupational Risk Assessment on the overload of the upper limbs
- Method also used in the International Standards ISO 11228-3



brieda cabins
dynamic project team

DYCS
dynamic control station

Harbour
Crane

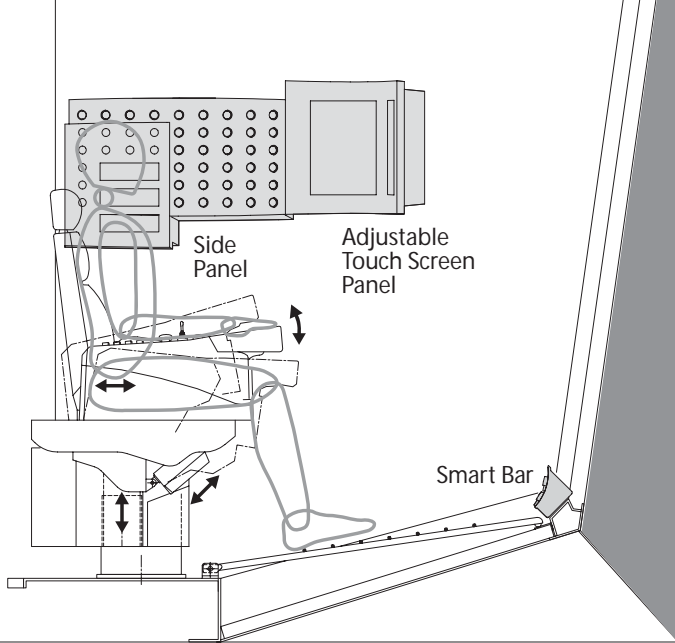


Electric Adjustable Boxes

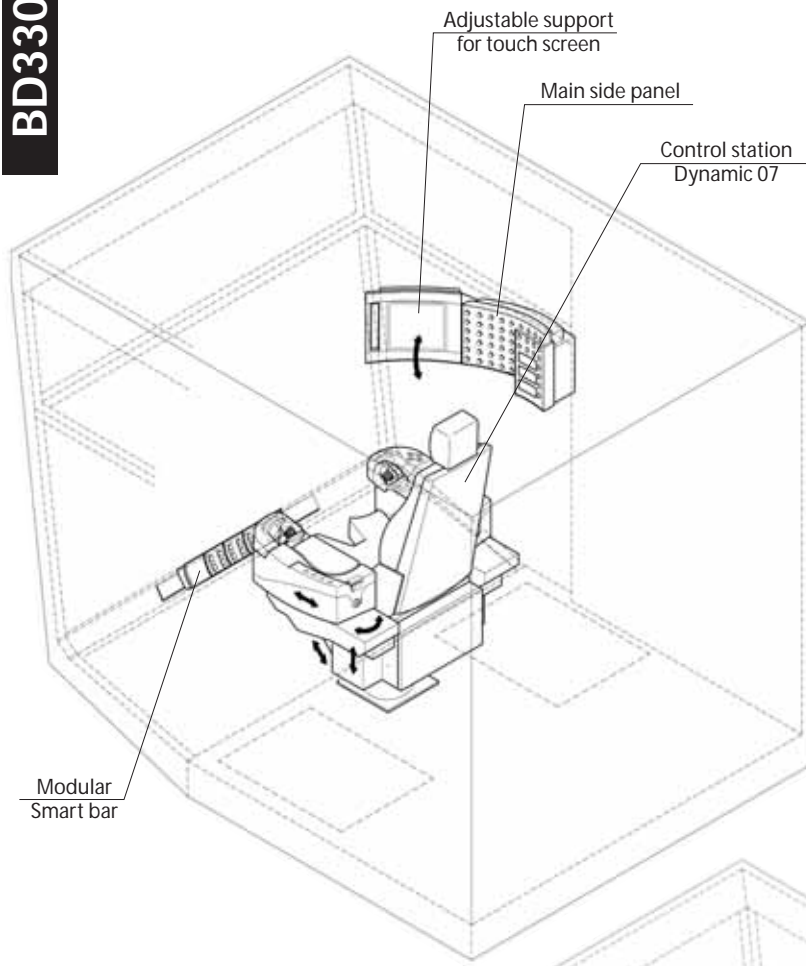
The universal floor attachment point makes installing or retrofitting the Brieda DYCS possible in every type of operators cab.

The adjustment of the control boxes is performed by an electric device for all the required directions. The DYCS utilizes an extremely strong structure with a shock-absorbing system, tested for over 5000 hours under stress conditions.

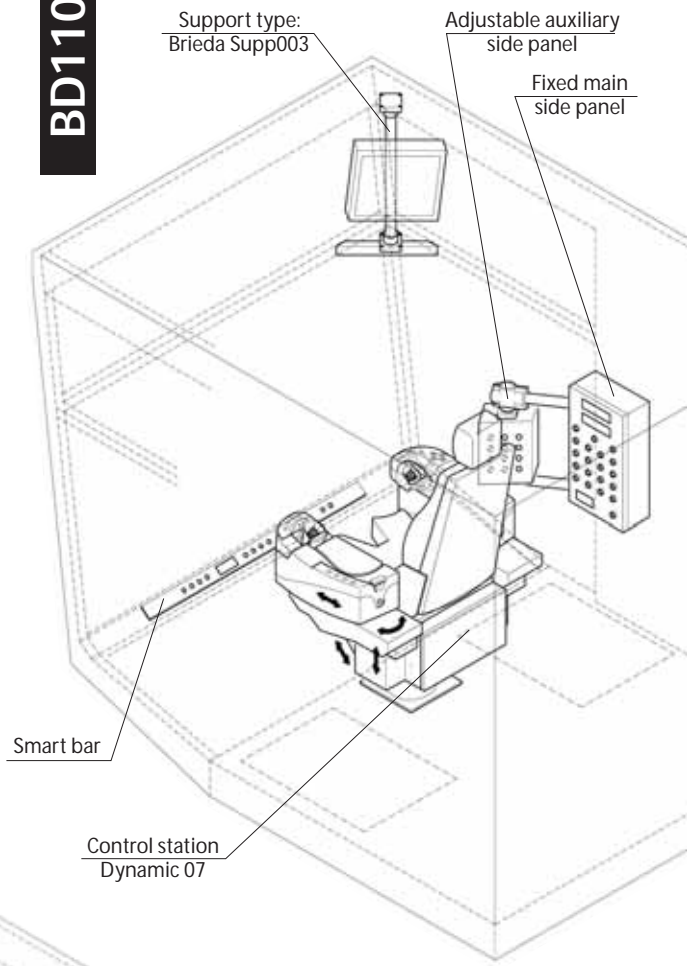




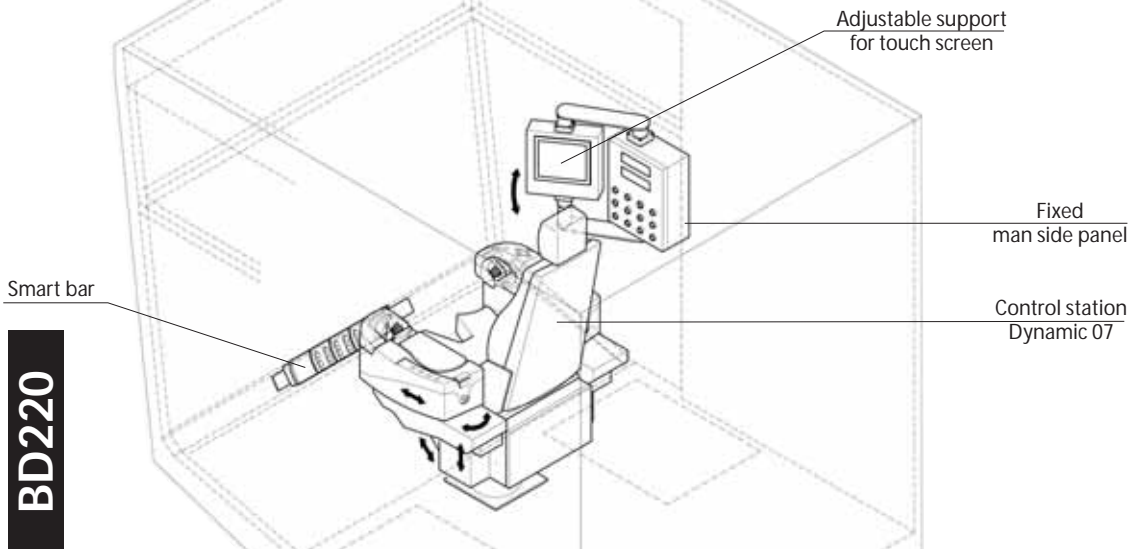
BD330

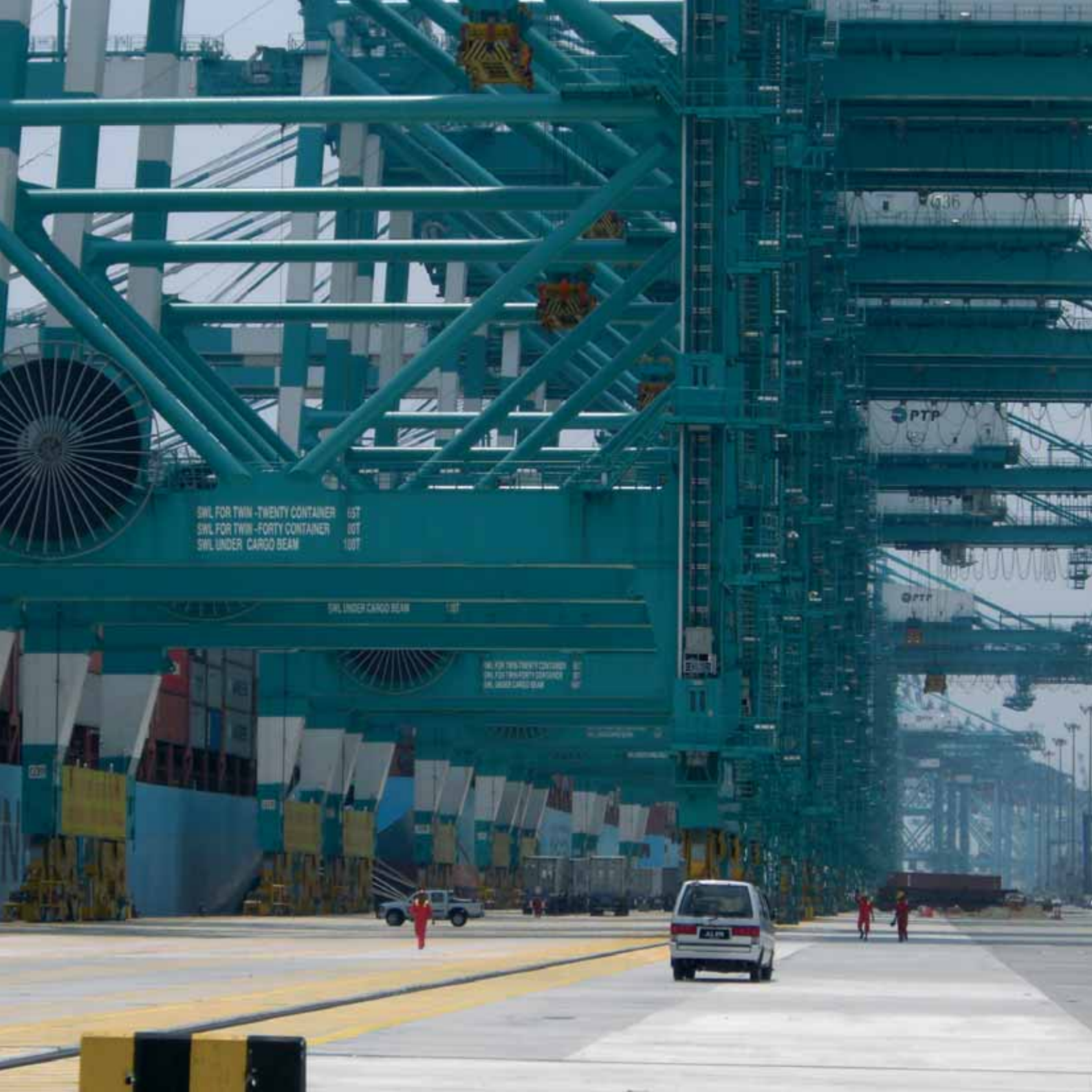


BD110



BD220





SWL FOR TWIN - TWENTY CONTAINER 65T
SWL FOR TWIN - FORTY CONTAINER 80T
SWL UNDER CARGO BEAM 100T

SWL UNDER CARGO BEAM 100T

SWL FOR TWIN - TWENTY CONTAINER 65T
SWL FOR TWIN - FORTY CONTAINER 80T
SWL UNDER CARGO BEAM 100T

436

PTP

PTP

EMR

EMR

EMR

EMR

EMR

EMR

EMR

EMR

EMR

EMR

EMR

EMR

EMR

EMR

EMR

EMR

EMR

EMR

EMR

EMR

Port of Tanjung Pelepas Malaysia

The 18th biggest port in the world

The new Dynamic Control Station reduces overall stress, including, as a consequence, reduction of the lower back lumbar load. Lumbar stress has always been one of the main causes of strain, loss of productivity and development of functional muscular disorders associated with crane operation. As you can see from the pictures, the driver's working posture is now ergonomic and completely different from the traditional method. In this way the problem has finally been properly addressed.



BRD PMB11

Brieda Control Station PMB11 with seat SB2

Installed in a Polivis x cabin

Technical features:

- Structure of 1,5 mm and 2,5 mm press-bent steel plate
- Rotating type control station, mounted on Brieda ball bearings system with stop adjustment
- Adjustable control boxes with lifting tops and 200 mm. stroke
- Control boxes with width 250-300-330 mm
- Space under the seat to locate the terminal board.
- Paint finish

Brieda seat SB2• Seat with mechanical suspension

- Driver weight adjustment
- Height seat regulation with the possibility to incline the cushion
- Rolling slide ways can be locked from either side, right or left, with front and back end stops by a regulation lever
- Safety cover
- Cold foamed polyurethane upholstery
- Reclining backrest by a lever
- Backrest with lumbar support
- Headrest with height regulation as the seat upholstery
- Adjustable armrest with height regulation
- Seat with arrangement for safety belts two points
- Pocket documents in the rear backrest



BRD PMB33

Brieda Control Station PMB33 with seat SB1

Features:

- Rotating type control station with stop.
- 100 mm. travel adjustable control boxes on the sloping side

This adjustment allows the operator to change the joysticks height in relation to the seat and according to his needs.

- Special space is provided under the seat for the terminal board to be fit in
- Adjustable joystick box to have the joysticks in horizontal or inclined position
- Side boxes of different widths as per requirements
- Brieda SUPP002 adjustable monitor support

A peculiar feature, in addition to all the fundamental operative adjustments, is the possibility to tilt forward the complete seat with a special system called "Skiben".

This system enables to increase the visibility through the floor glass and decrease, at the same time, the stress in the operator's lumbar zone.

- Seat with special grooves in the cushions to ensure maximum transpiration
- Lower seat cushion with central U-shaped part for better visibility in the operative zone
- Strong fireproof upholstery
- Seat rails with 200 mm stroke
- Shock-absorbing base with weight adjustment
- Adjustable armrests
- Control levers designed to avoid any hindrance in the free zone of the U-shaped cushion
- SKIBEN seat tilting system
- Cushion softness adjustment in the lumbar zone



Floor Glasses



GS01

Walkable floor glasses mounted on opening frames for cleaning operations. Sliding footrest grids to improve the operator's visibility. Exterior safety bars

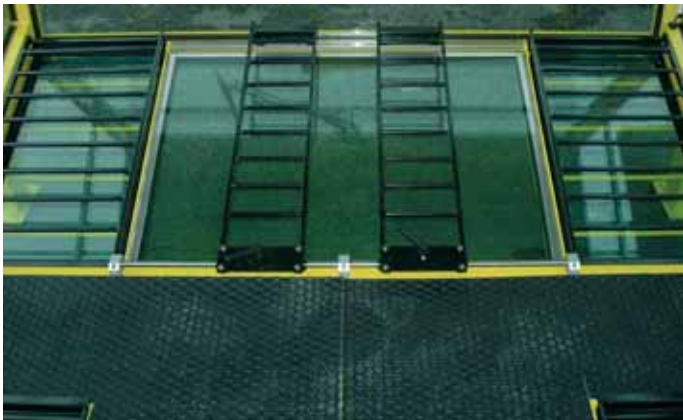




GS02
Walkable safety floor glass, 40 mm thick,
without exterior safety bars



GS03
Walkable safety floor glasses,
40 mm thick, complete with footrest grids



GS04
Fixed central glass, 40 mm thick, with sliding
footrest grids and removable side glasses,
3+3 mm thick, to clean the central glass
from inside the cabin



GS05
Floor glasses, 3+3 mm thick, mounted
on removable frames with interior
and exterior safety grids



XT01
Supply and wiring of electrical panels
complete with electrical material

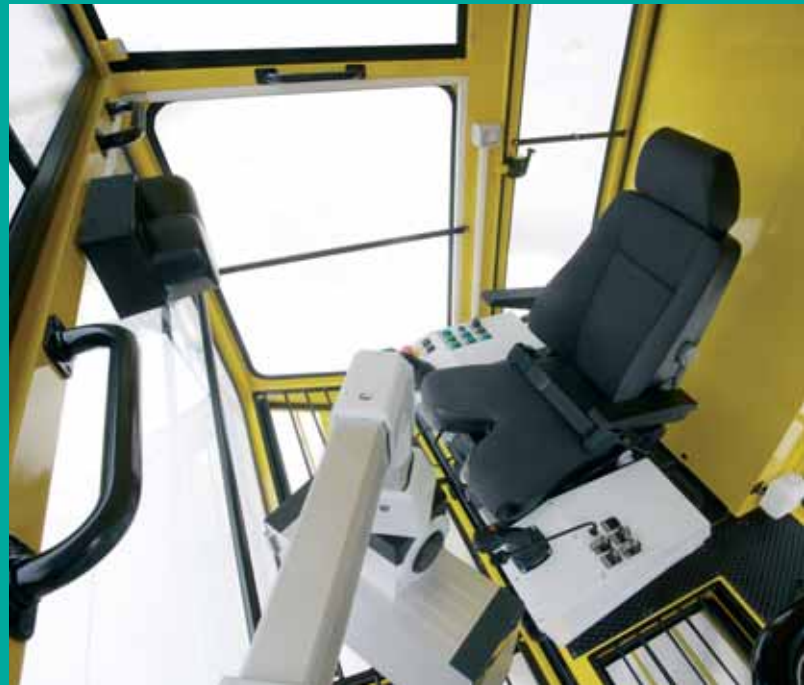


XT02
Brieda air pressurizing system
PRZ400

XT03
Brieda air pressurizing
system PRZ200



XT04
Ergonomic cabin interior view





XT06
Interior cabin details



XT07
Interior cabin details

XT05
Naval type door handle

XT08
Wired Brieda control station PMB33



XT09
Wired Brieda control station PMB33



www.briedacabins.com

OHD

MU02004-4



TRACT NO.: 023WJ06004 - VANH
TINATION: DALIAN PORT, CHINA
E OF CONTRACT
EQUIPMENT: COMPONENTS FOR STACKERS FOR
QINHUANGDAO PHASE V PROJECT
IFY: DALIAN HUARUI HEAVY INDUSTRY INTERNATIONAL CO. LTD
NO. 169 BAYI ROAD,
XIGANG, DISTRICT DALIAN 116013,
P.R. CHINA
TEL (86-411) 8685 2374 BZW 2373

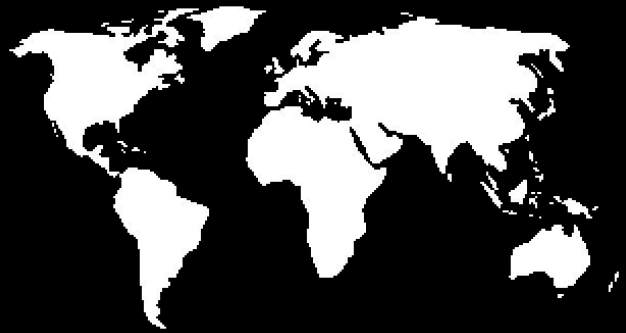
E/PACKAGE NO.: 3/6 INT 03
SS WEIGHT: KG 2620
WEIGHT: KG 2000
UREMENTS: L 312 X W 272 X H 286 CM
RAGE CODE:

Layout: Alessandro Raffin
Foto: R. M. Moretti / archivio Brieda
Stampa: DTG

[briedacabins.com](http://www.briedacabins.com)



STACKERS FOR
PHASE V PROJECT
INTERNATIONAL CO. LTD



briedacabins

Brieda Cabins
di Rino Brieda e figlio Srl

Via del Laghetto 21
33080 Porcia / Pn / Italy
Tel. +39 0434 921071
Fax +39 0434 922758
e-mail: brieda@briedacabins.com
<http://www.briedacabins.com>





briedacabins

*We are just entering
our 40th year of activity
with same design
innovation attitude,
certain that this way
we can really help
our customers success*