



HIT the *BRAKES!*



Rotator Products > AIST Standard

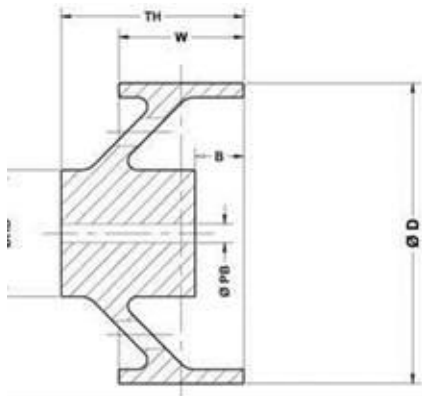
Proudly representing quality **Industrial Brake Wheels**, here in North America

- ✓ Rough / Pilot Bore > Semi finished Wheels with Pilot Bore
- ✓ Straight or Tapered Bore Machining & Balancing available (Customer Specifications)
- ✓ Wheels (4" to 30") available from **Stock** and Ready to Ship / Machine / Balance
 - ✓ **OT-1** (Offset) & **AT-2** (Angled) > available for **Immediate** delivery!
- ✓ Custom Sizes and Styles available. Please contact us for complete details.

Ductile Iron Construction

Resistant to Scoring + Wears Smooth & Evenly + Great Strength + Easy to Machine / Broach

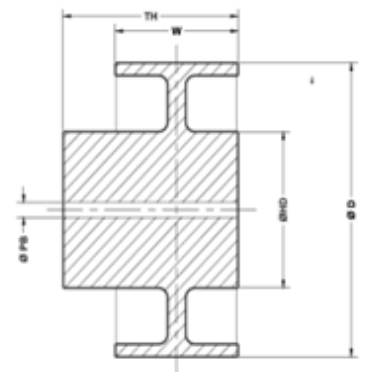
Angled AT-2



Pilot Bore Brake Wheels, Ready to Ship!



Offset OT-1



For all your Brake Wheel Requirements.

Website: www.rotatorproducts.com

- ✓ To further discuss your Brake Wheel requirements, please **CALL** or **EMAIL** us today.

1-877-682-8671

sales@rotatorproducts.com